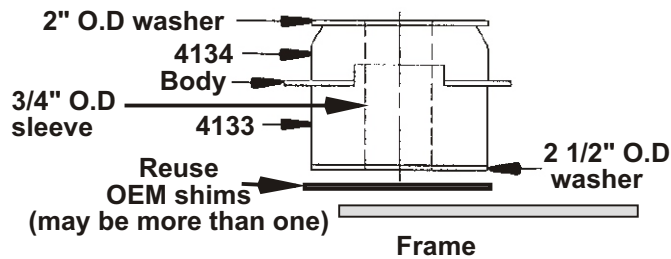


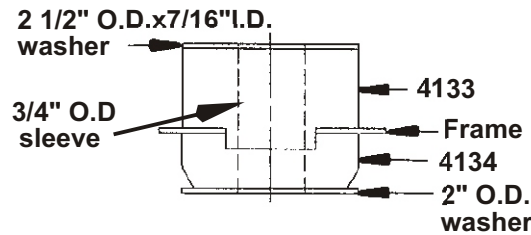
Installation instructions for set # 3-4141

POSITION # 1

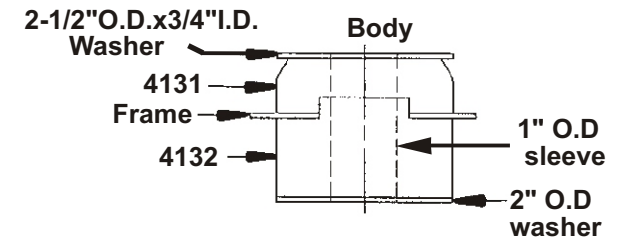


Must re-use original hardware.

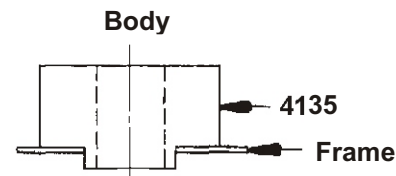
POSITION # 2,4,6,7



POSITION # 3



POSITION # 5



No sleeve, bolts or washers are used in this location

Note: some vehicles did not come with this bushing. (It is located in a hole in front of the upper rear spring perch.)

It is recommended that a factory service manual be purchased prior to performing any work on your car or truck.

Removal

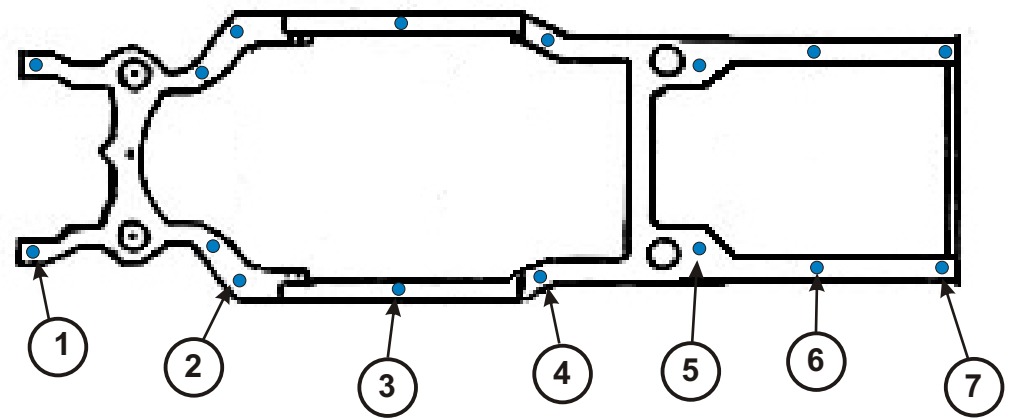
Spray all nuts to be removed generously with your favorite rust buster.

Note: When disassembling, note the quantity and positions of any shims that may have been inserted for body alignment. These shims will have to be reused to insure proper body alignment.

Remember: Only raise body high enough to remove & replace mounts. Always watch the fan shroud for sufficient clearance when raising the body. When jacking the body use a long enough 2X4 or 4X4 for maximum support. Never put jack directly on body panels.

Install mounts one side at a time with bolts on other side loosened only.

Retorque to factory specs.



INST.# 17132
16MAY/11 BRH

© 2008 Energy Suspension. All rights reserved. May not be reproduced, in any form, or by any means, without the written consent of Energy Suspension.